

MANUFACTURING SAFETY ALERT

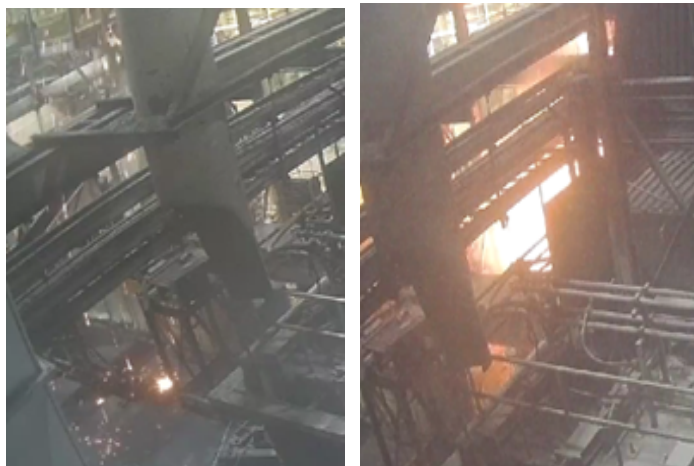
Ask Yourself
“Could it happen here?”

DESCRIPTION OF EVENT

Fire - Hot Work

Hot work was being performed on the fuel distribution conveyor using cutting torches. During the work, falling sparks and slag ignited oil-soaked material below. Personnel hosed down the area and reported the fire had broken out in the energy building. After extinguishing the fire, residual smolders were found and extinguished. Monitoring continued until the end of the shift and into the next shift.

Note: Prior to the hot work starting, the contractor was instructed not to use cutting torches due to increased fire risk.



SUGGESTED ACTIONS

- Ensure a 50-foot radius clean-up, including areas above and below hot work.
- Stage spark watches on multiple levels.
- Shield and contain the work area if the 50-foot rule cannot be met.
- Clearly communicate tool restrictions to contractors and confirm understanding.
- Regularly audit hot work areas to identify any necessary changes.

MOST IMPORTANT TAKE AWAY

Hot work sparks can ignite fires, endangering workers, causing job losses and disrupting business operations.

To prevent fires, rigorously follow the Hot Work Standard and Permitting process and implement all necessary precautions before starting hot work.

Regularly audit hot work areas to identify necessary adjustments and ensure workers are complying with permit holder instructions.

