



TAG

SAFETY ALERT

In the Bite

Description of the Event:

- A log truck driver was waiting to be loaded and decided to prepare the trailer and raised the stakes. Once the stakes were raised, the driver notice debris caught in the trailer frame.
- The driver used 3-point contact to climb onto the trailer to remove the debris. While doing so the driver placed his right hand at the base of the stake (in the bite) to pull themselves onto the trailer. Due to the movement caused by the driver's weight, the stake extension came down striking the driver's hand.
- This resulted in the driver breaking several bones in his hand.

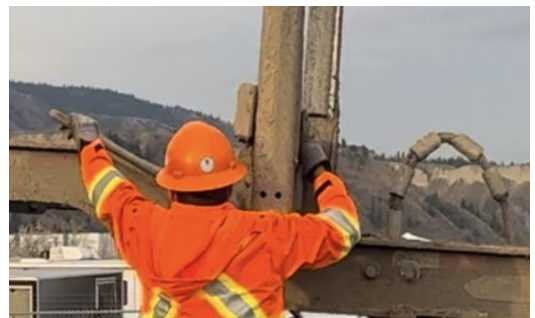


Contributing Factors:

- Lack of inspections. Faulty stake springs pose a risk to workers.
- Lack of maintenance. Mechanical repairs need to be communicated and prioritized.
- Gloves must offer appropriate protection for the level of risk.

Suggested Actions:

- Safe work procedures must be in place and used when climbing on a trailer.
- Never put yourself or your hand in the bite.
- Regular pre-trip and post-trip inspections of the truck and trailer.
- Regular maintenance of the truck and trailer.



BC Forest Safety

Safety is **good** business

[Click here](#) to access this safety alert from our website.

BCFSC welcomes all incident or near-miss submissions. If you have an incident you'd like to share or would like to subscribe to the **TAG Safety Alert** [click here](#). BCFSC will review and remove all identifying information to protect your privacy.

Connect With Us: bcforestsafe.org | [Facebook](#) | [Twitter](#) | [YouTube](#) | [LinkedIn](#) | [Instagram](#)

Disclaimer: TAG Alerts are voluntarily submitted by workers or companies. We encourage the sharing of information that can help improve safety for all workers. The BC Forest Safety Council is not responsible for accuracy of content.



BC Forest Safety

Unit 8C - 2220 Bowen Road, Nanaimo, BC, V9S 1H9
Central BC: 2666 Queensway, Prince George, BC, V2L 1N2
Toll Free: 1.877.741.1060 | bcforestsafe.org