



So many options!

As the seasons shift, it's the perfect time for workers and companies to review their safety training, emphasizing the importance of due diligence in every aspect of their operations. This is particularly crucial as work activity increases across BC. Regardless of whether your team is well-established or has just welcomed new workers, the BC Forest Safety Council (BCFSC) offers helpful resources to support requirements and best practices, as well as to encourage ongoing learning. Here's what we offer:

- Online Learning Centre: Access a variety of free online forest safety courses that are accessible where and when you are ready for training.
 - In-Person Training Courses: Participants benefit from our knowledgeable instructors, valuable interactions with industry peers through group activities, as well as printed materials.
 - Worker Competency Assessments: Tools to ensure work is performed safely by trained professionals with the right expertise.
 - Webinars & Workshops: Explore on-demand webinars and online workshops to enhance your knowledge.
- [Describe Safe Decision Making in a Forestry Workplace](#)
 - [Due Diligence – Wood Products Manufacturing Supervisor](#)
 - [Effective Communication – Wood Products Manufacturing Supervisor](#)
 - [Forestry Safety Overview](#)
 - [Grapple Yarder Operator](#)
 - [Hazard Identification, Inspection and Investigation – Forest Supervisor](#)
 - [Hazard Identification, Inspection, Investigation – Wood Products Manufacturing Supervisor](#)
 - [Hook Tender](#)
 - [Identifying Hazards and Assessing Risk – Wood Product Manufacturing](#)
 - [Introduction to Dangerous Trees on Forestry Worksites](#)
 - [Landing/Utility Person](#)
 - [Leadership and Professionalism – Wood Products Manufacturing Supervisor](#)
 - [Mechanized Harvesting](#)
 - [Off-Road Vehicle Knowledge Unit](#)
 - [Orientation, Training and Skills Development – Forest Supervisor](#)
 - [Orientation, Training and Skills Development – Wood Products Manufacturing](#)
 - [Phase Congestion](#)
 - [Professional Industry Driver](#)
 - [Resource Road Driver Knowledge Unit](#)
 - [Rigging Slinger](#)
 - [Road Building](#)
 - [Serious Incident Investigation](#)
 - [Stand Tender](#)
 - [Tower Operator](#)
 - [Winch Assist Harvesting](#)

Online Learning Centre

Our online Learning Centre library of courses continues to grow, with nearly 40 selections – all at no cost to workers and companies in BC's forestry and manufacturing sectors:

- [Basic Forest Worker](#)
- [Basics of Due Diligence – Forest Supervisor](#)
- [Basics of Effective Communication – Forest Supervisor](#)
- [Basics of Leadership and Professionalism – Forest Supervisor](#)
- [Blasting Hazards and Safety](#)
- [Chokerperson](#)
- [Combustible Dust Training for Contractors](#)
- [Combustible Dust Training for Managers and Employers](#)
- [Combustible Dust Training for Workers](#)
- [Cornerstones of Effective Safety Supervision – Forest Supervisor](#)
- [Cornerstones of Effective Safety Supervision – Wood Products Manufacturing Supervisor](#)

Courses are regularly being developed, so check our [Course Catalogue](#) to view a comprehensive list.

Continued on page 24...

Continued from page 23...

In-Person Training Courses

For those seeking in-person training, BCFSC provides a variety of options for Fall and Winter 2024. To secure your spot, we recommend registering early:

Start Date	Location	In-Person Training Courses
Oct 9	Kamloops	Basic Incident Investigation
Oct 10	Kamloops	Due Diligence for Forest Supervisors
Oct 16	Cranbrook	Basic Incident Investigation
Oct 17	Cranbrook	Due Diligence for Forest Supervisors
Oct 17	Prince George	Due Diligence for Forest Supervisors
Oct 22	Nelson	Falling Supervisor
Oct 31	Campbell River	Due Diligence for Forest Supervisors
Nov 7	Kamloops	Leadership and Communication for Forest Supervisors
Nov 12	Campbell River	Falling Supervisor
Nov 14	Prince George	Leadership and Communication for Forest Supervisors
Nov 27	Campbell River	Leadership and Communication for Forest Supervisors
Nov 29	Campbell River	Basic Incident Investigation
Dec 6	Prince George	Basic Incident Investigation

Visit our [Course Schedule](#) to see current information on all available courses and to enroll.

If scheduled sessions and locations aren't convenient for your operations, consider our requested training option, where our instructors come to your location at cost-recovery pricing. Email training@bcforestsafesafe.org to learn more.

Worker Competency Assessments

In addition to training courses, we offer industry-developed assessments that supervisors can use on the job to ensure their workers are qualified for their operations:

All Occupations

- [Basic-Forest-Worker-Assessment](#)

Yarding

- [Grapple-Yarder-Assessment](#)
- [Hooktender-Assessment](#)
- [Landing-Utilityperson-Assessment](#)
- [Chokerperson-Rigging-Slinger](#)
- [Tower-Operator-Assessment](#)

Mechanized Harvesting


- [Feller-Buncher-Assessment](#)
- [Skidder-Assessment](#)
- [Dangle-Head-Processor-Assessment](#)
- [Hydraulic-Log-Loader-Assessment](#)
- [Forwarder-Assessment](#)
- [Hoe-Chucker-Assessment](#)

Road Building

- [Dozer-Operator-Assessment](#)
- [Excavator-Operator-Assessment](#)
- [Articulated-Rock-Truck-Operator-Assessment](#)
- [Grader-Operator-Assessment](#)
- [Wheel-Loader-Operator-Assessment](#)
- [Rock-Drill-Operator-Assessment](#)

Webinars and Workshops

Click on the link to access our [Webinars & Workshops](#) covering a range of forest safety related topics.

We hope that this article inspires you to enhance your worker training and assessment program. We're here to answer any questions you may have about our courses and training resources. Contact us at: training@bcforestsafesafe.org. 

Introduction to Dangerous Trees on Forestry Worksites


BCFSC launched the Introduction to Dangerous Trees on Forestry Worksites course in May 2023 and to date 1,346 participants have completed the training to the end of July 2024.

This free one-hour online orientation course is intended for workers who work around dangerous trees in forestry operations - harvesting, silviculture and firefighting. **This is a basic awareness training course and does not train you to assess dangerous trees. The Wildlife Dangerous Tree Assessor Certificate Program is a different training program that is offered by UNBC.**

A danger tree is any tree that presents a hazard to workers due to lean, physical damage, overhead condition, deterioration or any combination of these factors. A tree does not have to be dead to be a danger tree and a dead tree is not necessarily dangerous. The key to working safely around danger trees is to conduct a thorough risk assessment on any areas where workers are to be working.

Upon completing this course, you should be able to:

- Understand what a dangerous tree is and the significance for all forestry workers
- Explain what happens on worksites to identify and control dangerous trees
- Describe basic dangerous tree characteristics and what to look for
- Understand how to keep yourself and others safe when working around dangerous trees

Click here for more information, including how to enroll: [Introduction to Dangerous Trees on Forestry Worksites](#) 

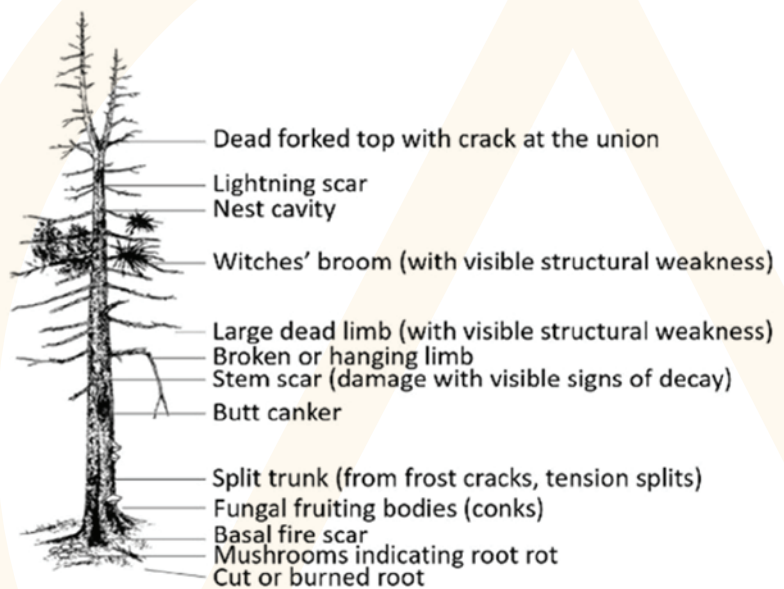


Image courtesy of BC Wildlife Dangerous Tree Committee