

MANUFACTURING SAFETY ALERT

Ask Yourself
"Could it happen here?"

DESCRIPTION OF EVENT

Lock-Out Gate Securement

Every gate that accesses a lockout area must have signage indicating it is a lockout area. It must also be secured and require a tool to open the gate. The gate is considered a safeguard and guards must be secured requiring a tool to open or remove.

The photos illustrate examples of non-compliance and approved compliance in two different ways.

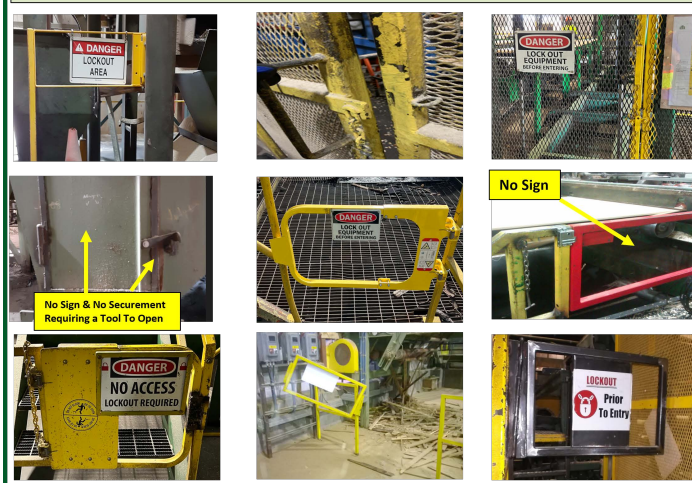
SUGGESTED ACTIONS

- Audit all lockout area gates for compliance, noting any non compliant gates (i.e. those lacking proper signage and requiring a tool for opening).
- Develop a plan to address access gate issues in lockout areas.
- Revise workplace inspection programs to include checking access gates to lockout areas for compliance.

Compliant Examples of Secured Gates Requiring A Tool To Open



Non-Compliant Examples Below, Showing Unsecured Gates With No Tool To Open Or No Signage Into A Lockout Area



MOST IMPORTANT TAKE AWAY

Regularly review all locked-out areas to ensure that gates are compliant.

MAG
Manufacturing Advisory Group



BCFSC welcomes all incident or near-miss submissions. To protect your privacy, we will review and remove all identifying information.

To share an incident or to subscribe to the Safety Alert of the Week, visit: www.bcfsc.org/safety-alerts/

Scan the QR Code
with your mobile
device's camera to
access this alert.

