



**BC Forest Safety**

## Emergency Response Planning:

Interior Safety Conference | May 9<sup>th</sup>, 2024



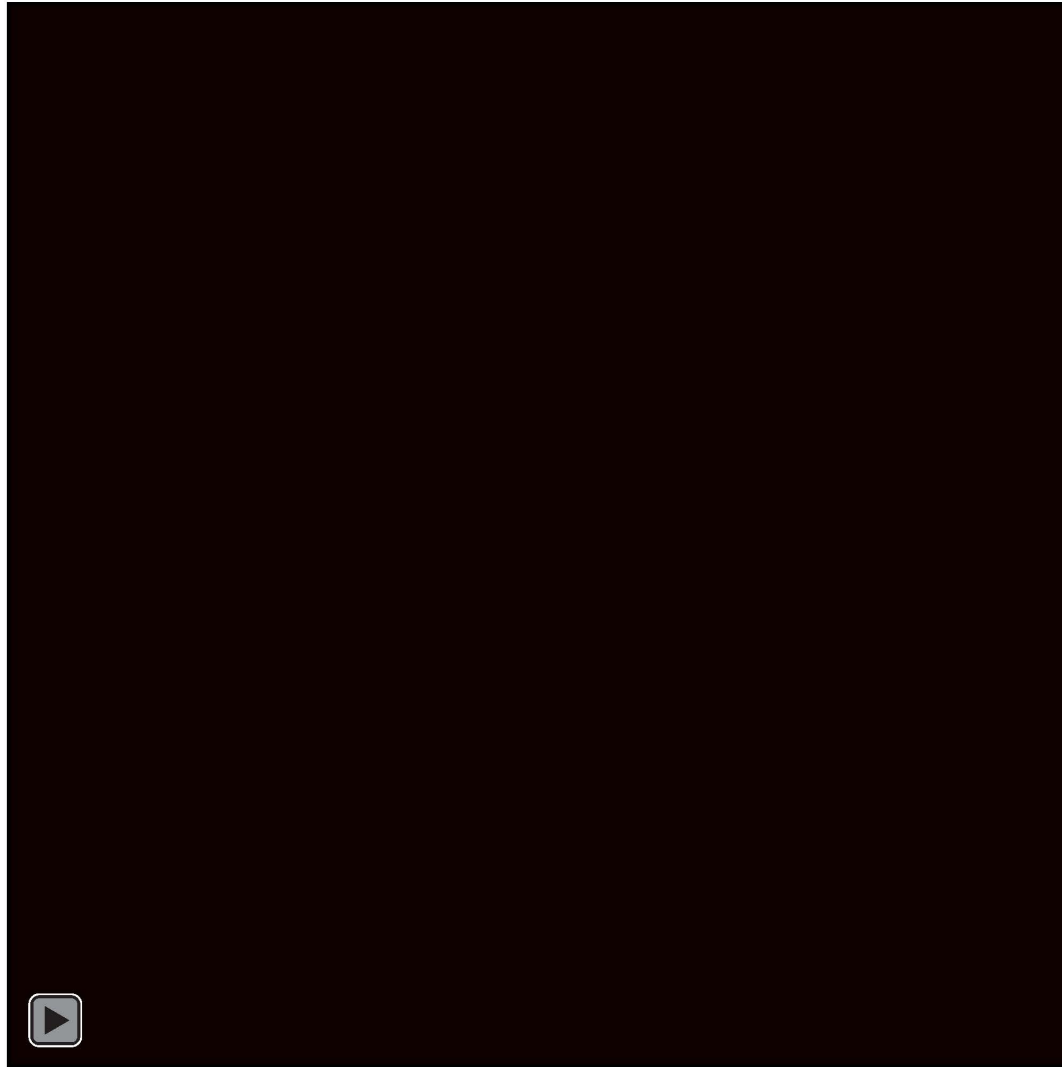
# AGENDA:

- Defining Emergencies & Response Planning in Forestry Operations
- WCBC OHS Regulation's
  - Part 3 Updates
- Risk Assessments
- Planning & Training (Drills)
- BCFSC Initiative – ERP Procedures & Awareness

Note: Not a detailed discussion of legislative updates and requirements

# Emergency Response Planning – HOW PREPARED ARE YOU?

---



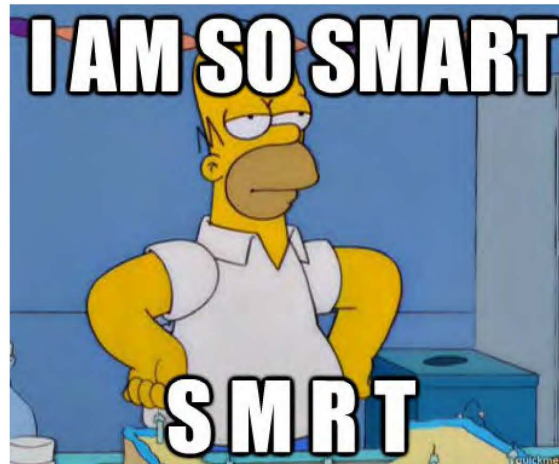
# Emergency Definition

---

## What is an Emergency?

### Merriam-Webster Dictionary:

1. An unforeseen combination of circumstances or the resulting state that calls for immediate action.
2. An urgent need for assistance or relief.



# Emergency Definition

---

## Wikipedia:

- An **emergency** is an urgent, unexpected, and usually **dangerous situation** that poses an immediate risk to health, life, property, or environment and requires **immediate action**.

## Canadian Centre for Occupational Health and Safety (CCOHS):

- An **emergency** is any **situation** or occurrence of a **serious nature**, developing **suddenly and unexpectedly**, and demanding **immediate action**.



## Emergency Definition

---

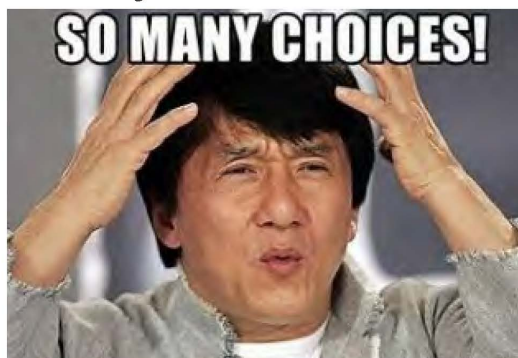
### CCOHS Emergency Response Plan:

- An integrated set of policies and procedures that allows you to **prepare for**, **respond to** and **recover from** emergency incidents.

How does this relate to Forest Sector **workplace** activities?.....

### *Workers Compensation Act - Part 2 Division 1:*

"**workplace**" means any place where a worker is or is likely to be engaged in any work and includes any vessel, vehicle or mobile equipment used by a worker in work;



# What is a Forestry Workplace Emergency?

---

## ***OHSR Part 26.1: Forestry Operations and Similar Activities:***

***"forestry operation"*** means a workplace where work is done in relation to silviculture or harvesting trees, including constructing the means of access and transporting the harvested trees to a facility where they are processed or from which they are exported.

***However....there are EXEMPTIONS:***

## ***OHSR G26.1: Definition of resource roads***

Section 1.1 of the *Regulation* exempts resource roads from being considered a “workplace”.

***However....there are EXCEPTIONS...to the EXEMPTIONS!***

For further clarification refer to OHS Guideline G1.1(1).



# What is a Forestry Workplace Emergency?

---

## ***Guideline G1.1(1) Resource Roads:***

"resource road" means a road or portion of a road on Crown land, and includes a bridge, culvert, ford or other structure or work associated with the road, but does not include a highway within the meaning of the *Transportation Act*.

- AND -

A portion of a resource road is a workplace during any period within which the portion is being:

- Built
- Maintained
- Repaired
- Rehabilitated
- Stabilized
- Upgraded
- Removed or
- Deactivated





# What is a Forestry Workplace Emergency?

---

“vehicles or mobile equipment operated or occupied by workers on resource roads will be workplaces. Employers therefore have an obligation to ensure the health and safety of their workers using resource roads.”



Emergency Response Planning & forestry operations;

- An unforeseen situation that threatens employees, customers, or the public; disrupts or shuts down company's operations; or causes physical or environmental damage.
- This can pose actual or potential hazard to life, environment, facility, production.



# What is a Forestry Workplace Emergency?

---

THE POINT IS - FORESTRY WORKPLACES ARE:

Difficult to Define & Varied!

DYNAMIC rather than STATIC

- Conditions & Hazards Change – Seasonally – Daily – Hourly!
- You need to be able to adapt and react operationally.
  - Your Emergency Response Planning **MUST** do the same!
    - Changes in weather thorough out the day (freeze/thaw).
    - Driving to/from workplace(s).
    - Etc., Etc., Etc.



# OHS Part 3 Amendments – Forestry ERP Considerations

---

## Emergency Transportation Requirements:

The basis for determining whether an employer must provide emergency transportation;

- Current Requirement- travel time from a hospital.
- Proposed Amendment - travel time from an ambulance base.

Emergency transportation refers to:

- Motor vehicles such as an ETV.
- Industrial ambulance, or mobile treatment center.
- Helicopters and other forms of air or water transportation.

Note: The proposed definition means an ambulance operated by British Columbia Emergency Health Services (BCEHS) or otherwise authorized to operate under the Emergency Health Services Act.



## **Workplace Class Definitions & Minimum FA Requirement:**

- Class 1 workplace – a workplace other than a class 2, 3, or 4 workplace, i.e., one that is neither less-accessible nor remote;
- Class 2 workplace – remote but not less-accessible;
- Class 3 workplace – less-accessible but not remote; and
- **Class 4 workplace – a workplace that is both remote and less-accessible.**
  - ❖ Majority of Forestry workplaces.

# OHS Part 3 Amendments – Forestry ERP Considerations

---

## Definitions:

“less-accessible workplace” means;

- a) a workplace that includes a work area that cannot be safely accessed by ambulance personnel, or
- b) a ferry;

“remote workplace” means a workplace to which, **under normal travel conditions**, an ambulance that is a motor vehicle **cannot travel from its base in 30 minutes or less**, but does not include a ferry.

## Sec. 3.17 FA Procedures – Explanatory Notes:

If there is a work area that **cannot be accessed by ambulance personnel**, an employer must have procedures for how an injured worker can safely be moved in order to be transported to medical treatment.

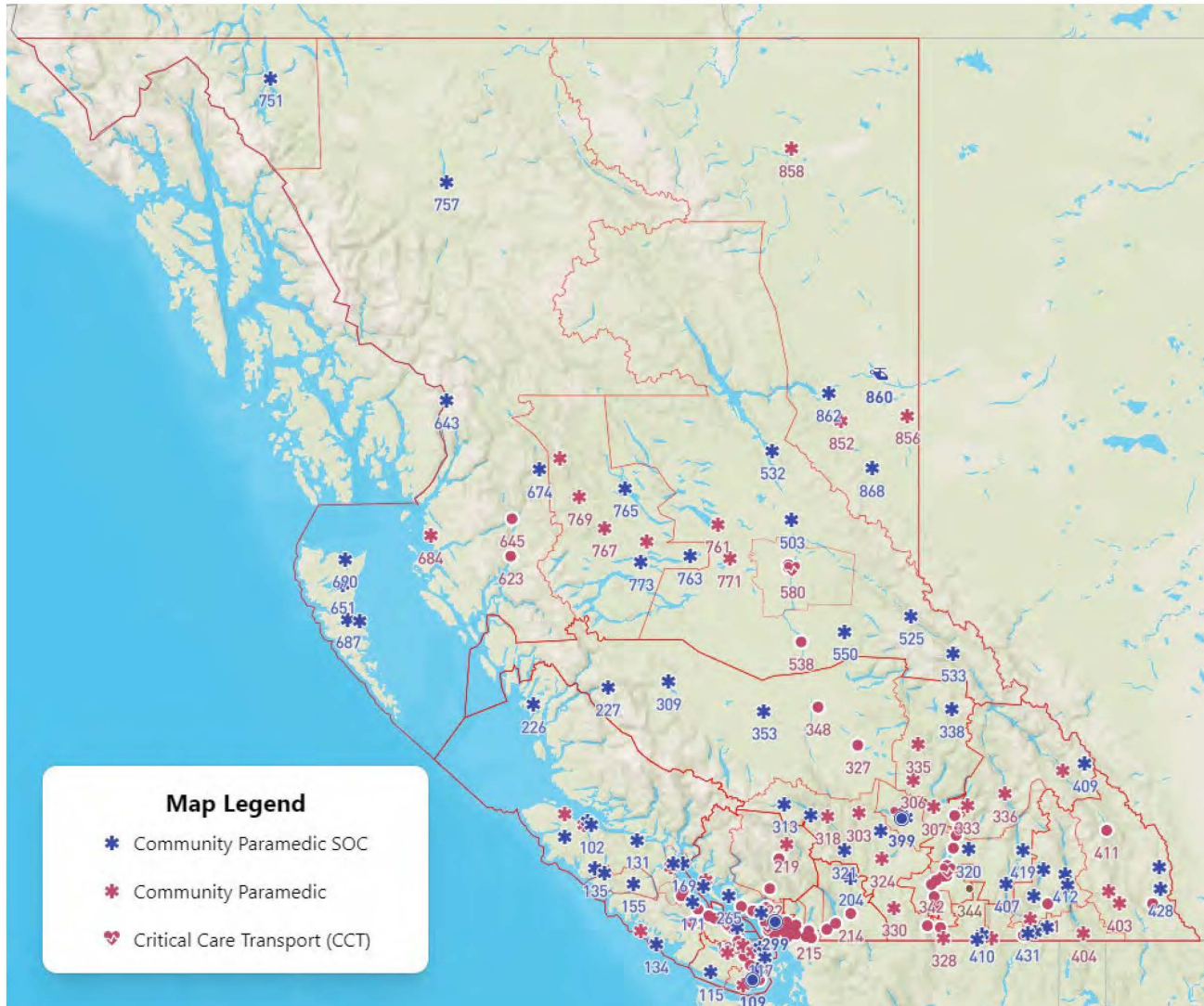


# OHS Part 3 Amendments – Forestry ERP Considerations

Current Regulatory Requirements		New Regulatory Requirements	
*Workers Present	Minimum Requirements (Hospital >20 Min. High Hazard Rating)	*Workers Present	Minimum Requirements (Class 4 Workplace, High Hazard Rating)
1	<ul style="list-style-type: none"> <li>Personal first aid kit</li> </ul>		
2-5	<ul style="list-style-type: none"> <li>Level 1 first aid kit</li> <li>Level 1 certificate</li> </ul>	2-5	<ul style="list-style-type: none"> <li>Intermediate first aid kit</li> <li>Intermediate first aid attendant w/ TE</li> </ul>
6-10	<ul style="list-style-type: none"> <li>Level 1 first aid kit</li> <li>Level 1 certificate w/ TE</li> <li>ETV</li> </ul>	6-9	<ul style="list-style-type: none"> <li>Intermediate first aid kit</li> <li>Intermediate first aid attendant w/ TE</li> <li>ETV for 1 injured worker</li> </ul>
11-30	<ul style="list-style-type: none"> <li>Level 3 first aid kit</li> <li>Level 3 certificate</li> <li>Dressing station</li> <li>ETV</li> </ul>	10-19	<ul style="list-style-type: none"> <li>Advanced first aid kit</li> </ul> <p><b>2 attendants:</b></p> <ul style="list-style-type: none"> <li>One basic first aid attendant w/ TE</li> <li>One advanced first aid attendant</li> <li>ETV for 1 injured worker</li> </ul>
31-50	<ul style="list-style-type: none"> <li>Level 3 first aid kit</li> <li>Level 3 certificate</li> <li>First aid room</li> <li>ETV</li> </ul>	20-49	<ul style="list-style-type: none"> <li>Advanced first aid kit</li> <li>First aid room</li> </ul> <p><b>2 attendants:</b></p> <ul style="list-style-type: none"> <li>One intermediate first aid attendant w/ TE</li> <li>One advanced first aid attendant</li> <li>ETV for 2 injured workers</li> </ul>



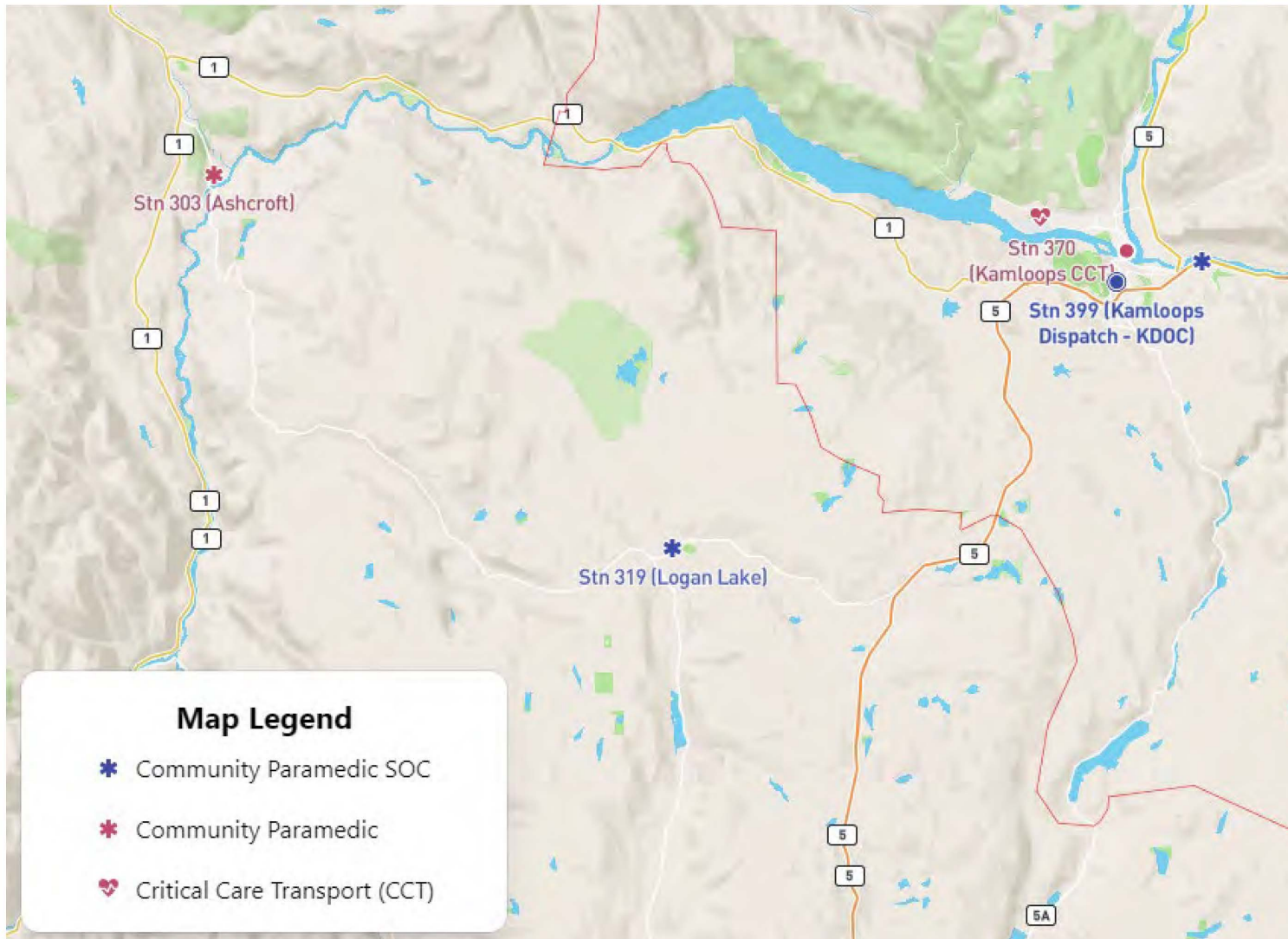
# OHS Part 3 Amendments – Forestry ERP Considerations



Source:  
[APBC Station Map](https://bcehs-map.vercel.app)  
([bcehs-map.vercel.app](https://bcehs-map.vercel.app))



# OHS Part 3 Amendments – Forestry ERP Considerations





# OHS Part 3 Amendments – Forestry ERP Considerations

Best 45 min 9 hr 3 hr 10

Ashcroft Community Health Centre, 700

Walhachin, British Columbia V0K 2P0

Add destination

Leave now Options

Send directions to your phone Copy link

via Highland Valley Rd/BC-97C	45 min
Fastest route	41.2 km
<a href="#">Details</a>	
via Highland Valley Rd/BC-97C and Barnes Lake Rd	46 min
	34.4 km

Explore Walhachin

- Restaurants
- Hotels
- Gas stations
- Parking Lots
- More

Search along the route Gas EV charging Hotels

Ashcroft Community Health Centre

Ashcroft

Walhachin, BC V0K 2P0

Anvil Peak

Spatsum

45 min 41.2 km

46 min 34.4 km



# OHS Part 3 Amendments – Forestry ERP Considerations

The screenshot displays a Google Maps interface with the following elements:

- Transportation Modes:** Best (42 min), Car (42 min), Bus, Walking (10 hr), Bicycling (2 hr 49), and Airplane.
- Origin:** Logan Lake Health Centre, 5 Beryl Dr, Log
- Destination:** Walhachin, British Columbia V0K 2P0
- Route Summary:** via BC-97C, 42 min, 41.9 km. Includes a "Details" link.
- Explore Walhachin:** Restaurants, Hotels, Gas stations, Parking Lots, and More.
- Map Features:** Search bar, Gas, EV charging, and Hotels filters. Landmarks include Anvil Peak, Tunkwa Provincial Park, Mamette Lake, and Logan Lake Health Centre.



# Forestry ERP Considerations - Assessments

---

## Assessments:

Employer required to complete a written assessment of the circumstances of a workplace to determine the appropriate level of;

- First aid equipment,
- Supplies,
- Facilities,
- First aid attendants, and
- Services.

In addition, the assessment must also set out;

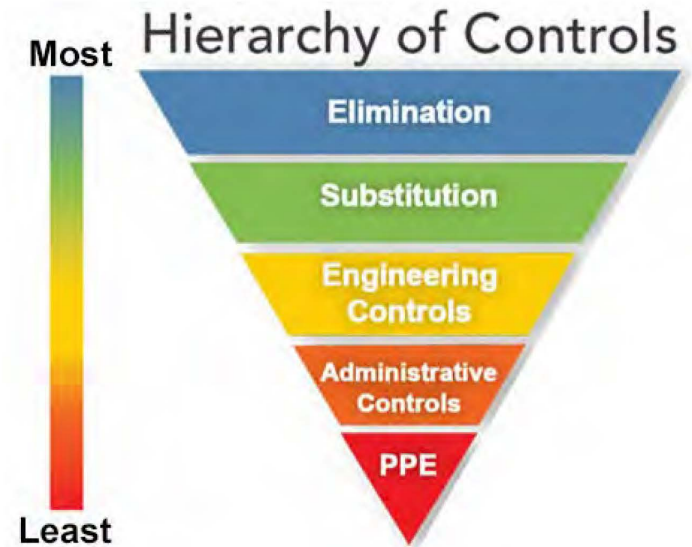
- The location of workers; and,
- The methods of transportation available.

**Note:** assessments must be prepared, reviewed and updated in consultation with the joint committee or the worker health and safety representative, as applicable.



# Forestry ERP Considerations - Assessments

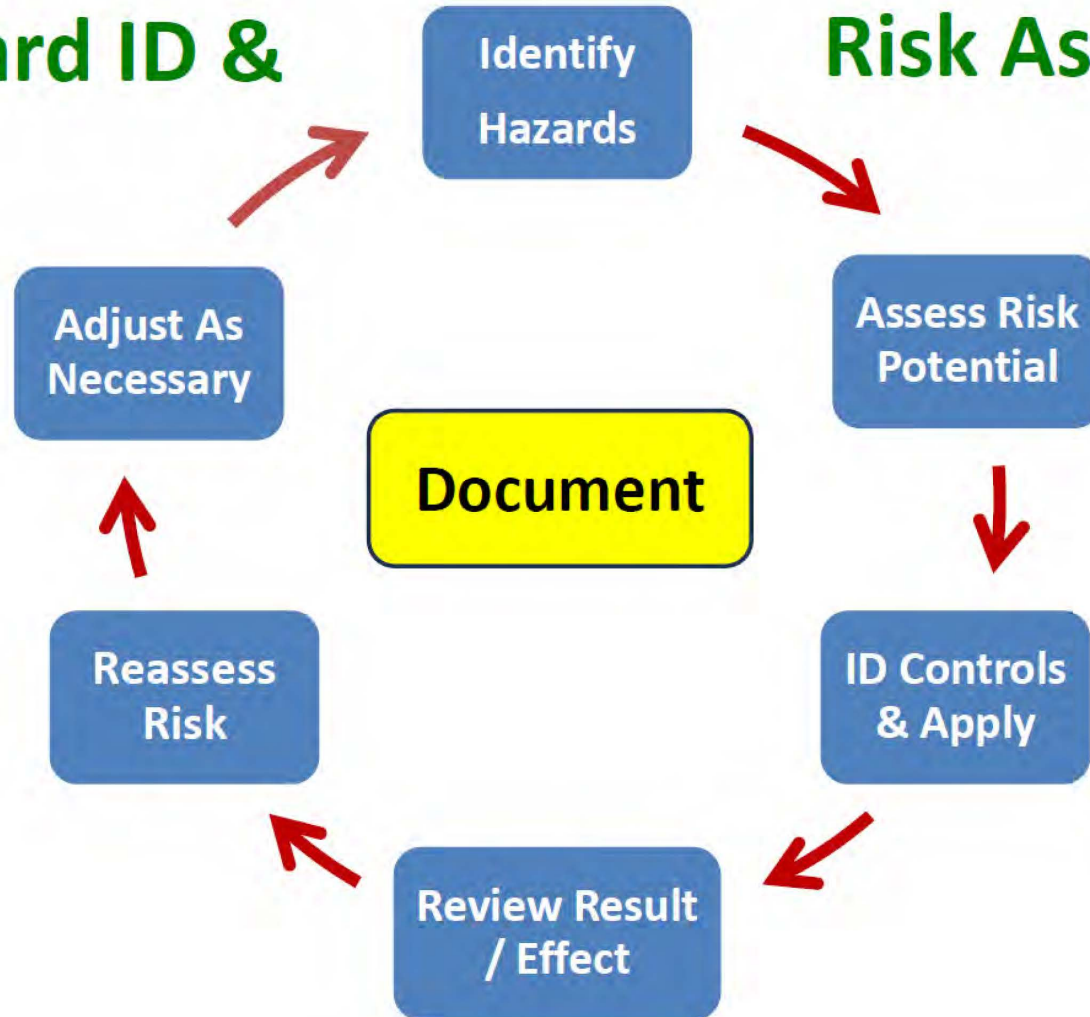
Normal Approach		Impact			
		Minor	Moderate	Major	Extreme
Probability of Occurrence	Rare	Low	Low	Medium	Medium
	Unlikely	Low	Medium	Medium	Medium
	Moderate	Medium	Medium	Medium	High
	Likely	Medium	Medium	High	High
	Very Likely	Medium	High	High	High



# Forestry ERP Considerations - Assessments

## Hazard ID &

## Risk Assess



# Forestry ERP Considerations - Assessments

---

Determine the most likely emergency situations in your workplace and, consider / assess items that may impact:

- RESPONSE time to the incident, and / or
- FIRST AID requirements, and / or
- RESCUE & EVACUATION of an injured worker.

Such As:

Slope & Terrain

Debris (slash, residuals)

Severity of Injury

Road Conditions

Rescue Equipment

Distance (road, ambulance)

Etc., Etc., Etc.!!

Weather / Season (mud , fog, snow etc.)

Egress / Access Constraints

FA treatment requirements

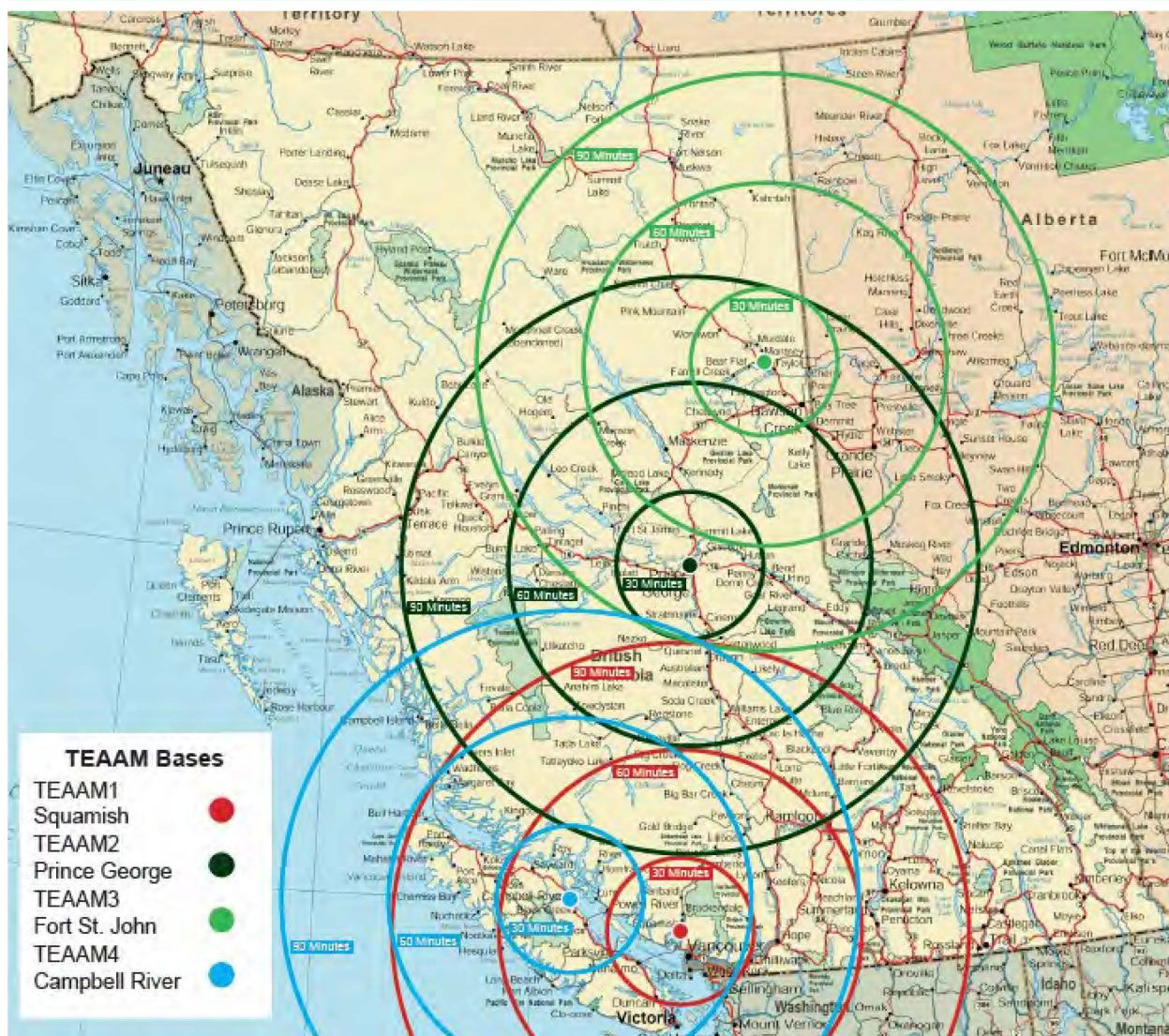
Working alone

Transport Options (ground, air, water)

Ambulance/Hospital Accessibility



# Forestry ERP Considerations - Assessments



OHS Guidelines Part 4 (G4.13(1):  
 Evacuation by air  
 Where a risk assessment made under section 4.13 concludes that removal by air is the most practicable method of evacuating injured workers, the employer's written procedures must conform to Transport Canada as well as WorkSafeBC requirements. Refer to Part 29 of the Regulation



# Forestry ERP Considerations - Drills

---

## OHSR 3.17 First Aid Procedures

- 4) At least once each year and whenever the procedures change, the employer must ensure that drills are conducted to ensure that
  - (a) the procedures are effective, and
  - (b) workers, first aid attendants and other persons referred to in subsection (3) are capable of fulfilling their roles and responsibilities.

## OHSR 4.14 – Emergency Procedures

- (1) Means of escape provided from any work area that could create an immediate danger to workers.
- (2) Exit routes must provide quick and unimpeded exit.
- (3) At least once each year emergency drills must be held to ensure awareness and effectiveness of emergency exit routes and procedures, and a record of the drills must be kept.

## OHSR 4.16 – Training

- (1) All workers must be given adequate instruction in emergency evacuation procedures applicable to their workplace.





# Common Emergency Response Planning Pitfalls

---

- Assuming your staff is well trained & Lack of employee training on how to respond.
  - Every employee **MUST** be trained on what their role is during an emergency.
- Poor communications during an event.
- Conducting half-hearted drills.
  - I.E., reviewing at tailgate meetings isn't sufficient.
- Failure to update your Emergency Response Plan.
  - Based on drills & changes in worksite conditions.
- Assuming the cavalry will always arrive.
  - Calling 911 is not an effective ERP!
- Insufficient relationships with key contacts.
  - WSBC OSO / Helicopter Companies / Other Contractors
- Lack of coordination with local authorities
  - Hospital/BCAS closures?



## Emergency Response Planning – BCFSC Initiative

---

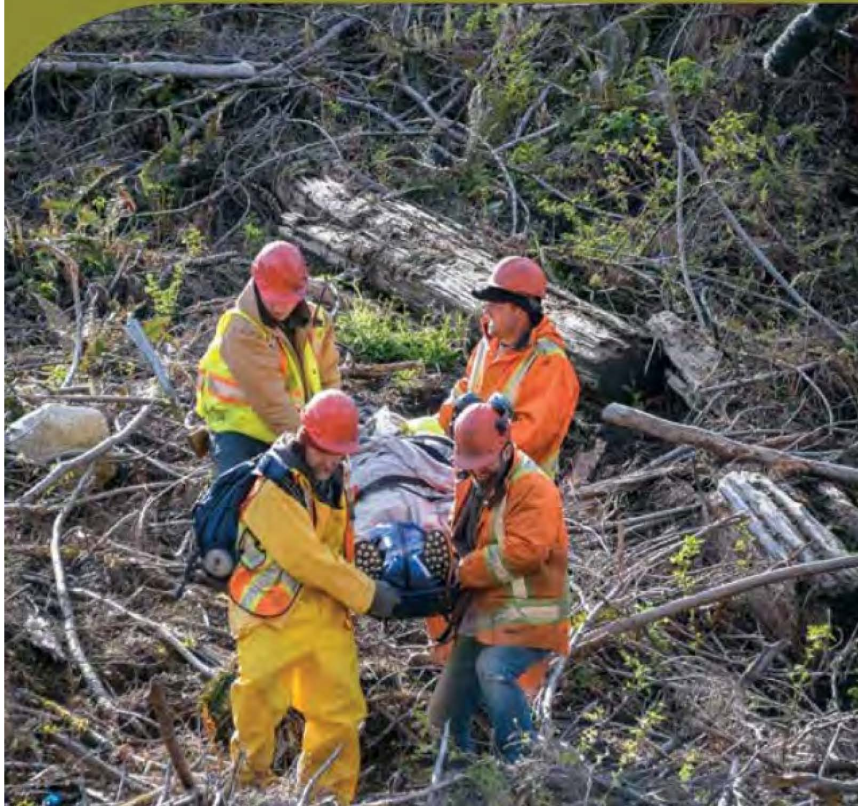
- Multi-year initiative – Identified as a priority by BCFSC Advisory Group Members
  - Focus on awareness and promoting best practices, building upon existing resources.



# Emergency Response Planning – BCFSC Initiative

## Every Minute Counts

Emergency Response Planning in Forestry



The video highlights a complex challenge all workers in remote areas face focusing on:

- What to do in an emergency situation.
- How to ensure you receive outside assistance as quickly as possible.

The video challenges the assumption that responding to emergencies is straightforward and someone will always be available to help.



# Emergency Response Planning – BCFSC Initiative

---

BCTS video illustrates an effective injured worker evacuation drill and how it relates to a good Emergency Response Plan.



- Drills identify weaknesses
- Drills are about learning
- Drills are team-building exercises
- Drills help make changes to the ERP
- Drills save lives

# Emergency Response Planning – Video Productions

## Video #1 – Equipment Rollover & Operator Extraction Procedures

***OHSR: 16.24 Alternative means of escape from a cab***

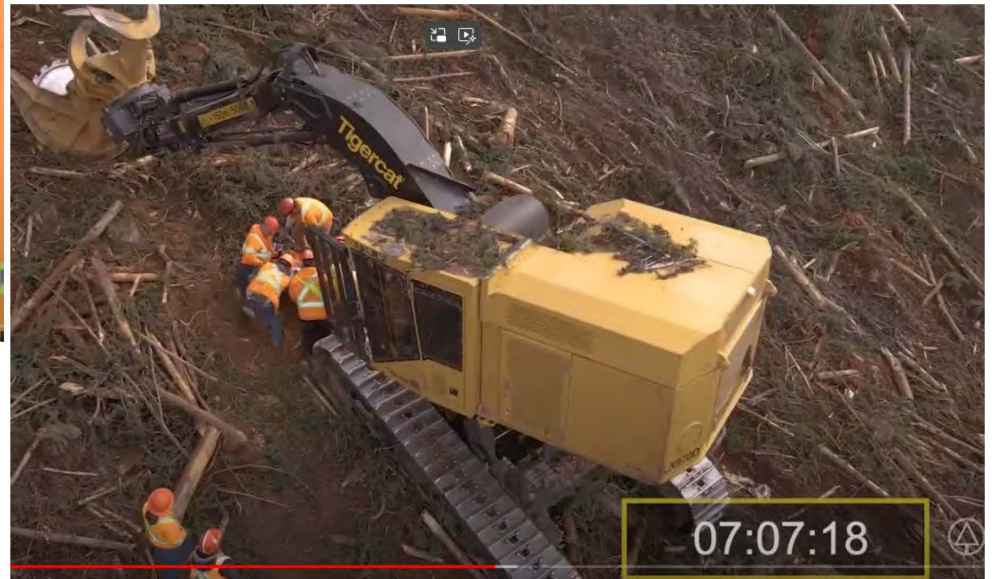


# Emergency Response Planning – Video Productions

## Video #2 – Operator Extraction and Steep Slope Rescue Drill

Importance of completing regular drills and refining plan based on outcomes.

*(OHSR: 4.14 Emergency procedures & 4.16 Training)*



# Emergency Response Planning – Video Productions

---

## Video #3 – Medivac Procedures for Injured Worker

When assessment determines that removal by air is the most practical method procedures must comply with:

- Transport Canada (TC), AND
- WorkSafeBC requirements.
  - Part 29 of OHSR (Aircraft Operations).
  - OHSR Part 26 requirements – written procedures for working around helicopters.

Video will focus on awareness & understanding of:

Communications;

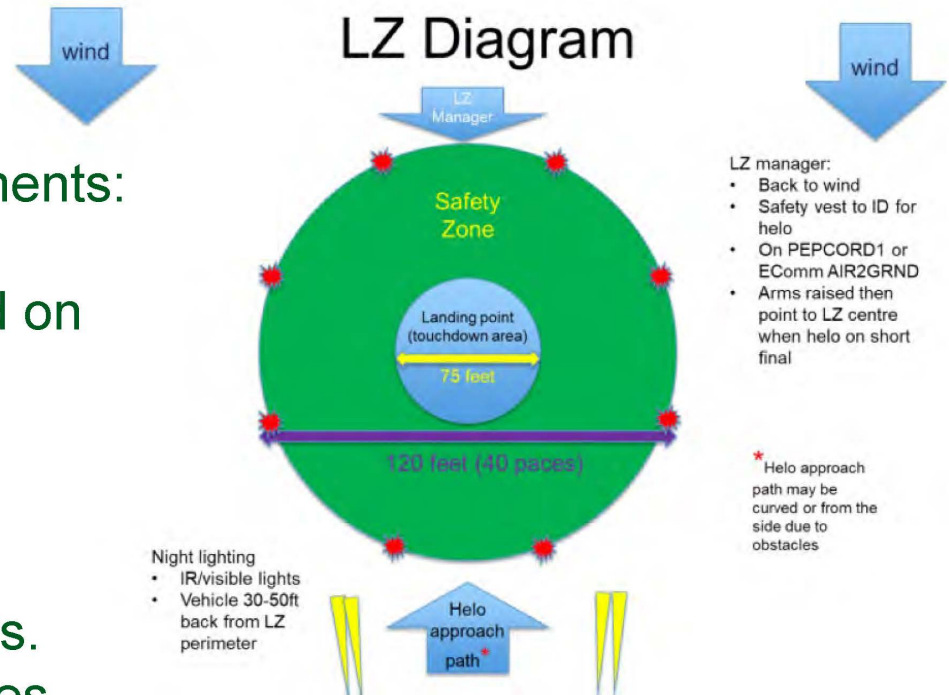
- Radios & frequencies
- Ground to air com's. – signaling
- Location & coordinates
- Chain of command – clear understanding of roles & resp.
- Etc.



# Emergency Response Planning – Video Productions

## Landing Zone & Equipment Requirements:

- Critical to success of air medivac.
- Min size/dimensions – often based on machine type/size/limitations.
- Proximity to patient – as close as possible.
- Must consider machine safety/limitations – eliminate delays.
- Obstacles and hazards – powerlines, slope, free of loose material (dust/snow etc.).
- Downwind preferred if possible.
- Compatible equipment.





## Summary:

---

- Operating conditions in Forestry are variable & constantly changing.
- Creates challenges unique to the sector that requires a great deal of planning & preparation for ERP's to be effective.
- OHSR Part 3 Updates will impact your ERP planning & training.
  - Remote & Less Accessible Workplaces.
  - Emergency Transportation requirements.
  - Assessments – ID hazards, risk potential, apply controls, adjust.

## First Aid Drills:

- Completed annually or when procedures change & documented!
- Ensure procedures are effective, roles & responsibilities understood.

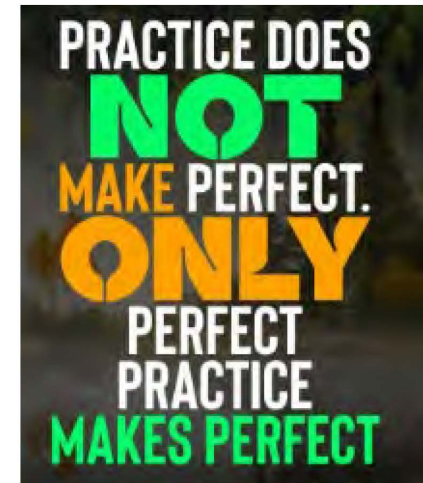
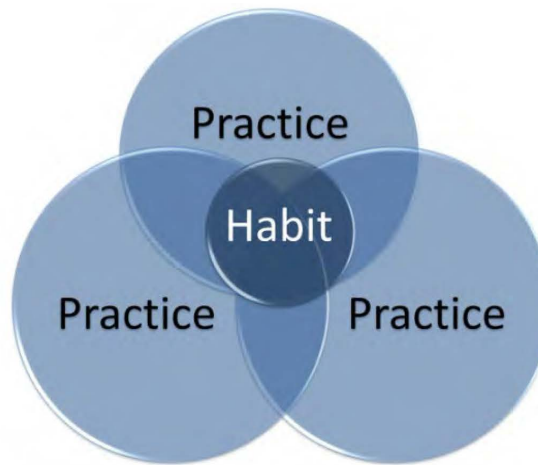


## Summary:

Just as a key to running a successful business is.....



A key component of an effective ERP is.....



**Thank You!**

