



SAFETY ALERT & BULLETIN OF THE MONTH

PLEASE SHARE THIS INFORMATION

Importance of Reporting

AOM: 2022-07-20



A “Close Call” or “Near Miss” is an unplanned event that doesn’t cause injury or harm but could have resulted in a more serious incident. They are red flag warnings that should be reported and are an important opportunity to discover a hazard and correct it before someone gets injured or worse.

Have a look at the following scenarios. Which one describes the type of workplace where you would like to work?

Scenario 1: Tony has been supervising the same crew for three years but only rarely gets information on new hazards or close calls that occur. He is surprised when one of his workers rolls an ATV trying to get through a large road deactivation.

Scenario 2: Susan often gets hazard and close call reports from her crew. Recently, several people have mentioned the difficulty of accessing their worksite because of deep road deactivations. Susan finds a safer, alternate way to access the site.

Close calls with the potential for serious injury are some of the most important items to report and do something about. In many cases, it is just luck that an injury or fatality didn’t occur. Look at close calls like a gift, allowing you to make changes to prevent a similar (or worse) incident from occurring in the future.



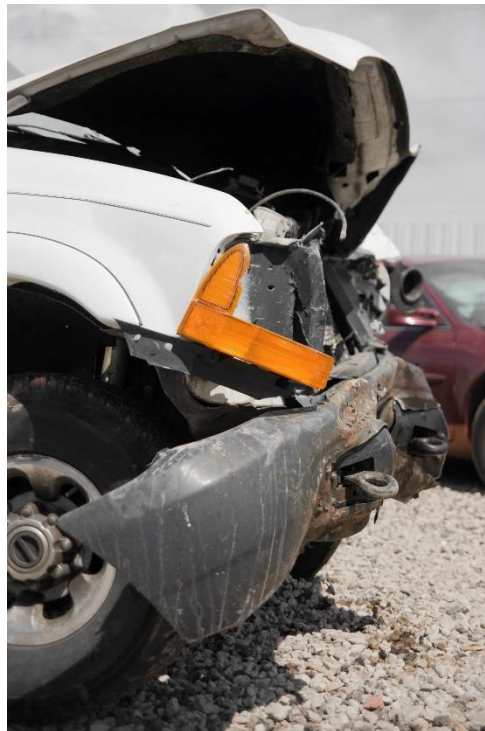


SAFETY ALERT & BULLETIN OF THE MONTH

Reporting incidents and taking corrective action requires some effort but it is well worth it. A focus on preventing future incidents is the mark of a good safety program and a company dedicated to building a good safety culture.

Safety Information:

- There are certain incidents that must be immediately reported to WorkSafeBC: serious injuries or fatalities, collapse of a bridge or crane and a fire or explosion that had the potential to cause serious injuries. Review [section 68 of the Workers Compensation Act](#) to learn more.
- Supervisors and management should make reporting easy for workers, even a verbal report or a phone call works to start. Documentation will have to be done but don't make it too complicated.
- Report hazards even if they are something that has become commonplace. Even though you may see the hazards often, that doesn't mean that they can't be better managed to make your worksite safer.



Prepared by: Gerard Messier RPF, CRS



BC Forest Safety

Main Office: 420 Albert Street, Nanaimo, BC, V9R 2V7
Central BC: 2666 Queensway, Prince George, BC, V2L 1N2
Toll Free: 1.877.741.1060 | bcforestsafety.org



SAFETY ALERT & BULLETIN OF THE MONTH

BCFSC Bulletin - News and Updates

BCFSC Latest News & Resources

BCFSC FIRS Lite App – The **BCFSC FIRS App** or **Forest Industry Reporting System** is a FREE resource available to all BCFSC Members. The first stage of the **BCFSC FIRS App** is a **lite version** and is now live and ready to use. It allows companies to submit and track incident reporting by submitting answers to five simple questions and uploading supporting photos into the record. It also includes a Supervisor's Queue allowing supervisors, safety professionals, and company owners to review submitted records and extract important information from the report such as the severity or nature of a reported injury.

The new lite version is available through the App store for Android and iOS devices. Simply go to the App store on your device and search for BCFSC FIRS to download the FREE App. To access the BCFSC FIRS Quick Add App, you will require a FIRS account. For security purposes, BCFSC will need to confirm your SAFE Certified Company first by emailing your registration request to FIRS@bcforestsafe.org. Registrations will be reviewed by BCFSC and once approved, your account will be established. An invitation email will be sent to your inbox where you can then set up your FIRS account with your registration details.

BCFSC Training:

Online Training

Phase Congestion Training – This free interactive online training course is available to help supervisors and workers better understand how to safely integrate phases and prevent phase congestion. The training provides realistic logging scenarios and was developed with the input of industry experts. Click here to self-enroll: [Online Learning Centre – BC Forest Safety Council](#)

Worker Assessment and Training

Each forestry occupation requires different knowledge and skillsets to perform the job at hand. BCFSC worked with industry to develop competency-based standards, training and assessment tools to help employers evaluate workers and complete on-the-job training.

Check out our [FREE online training and assessment forms](#) for Basic Forest Workers, Yarding, Mechanized Harvesting and Road Building.



BC Forest Safety

Main Office: 420 Albert Street, Nanaimo, BC, V9R 2V7
Central BC: 2666 Queensway, Prince George, BC, V2L 1N2
Toll Free: 1.877.741.1060 | bcforestsafe.org