

MANUFACTURING SAFETY ALERT

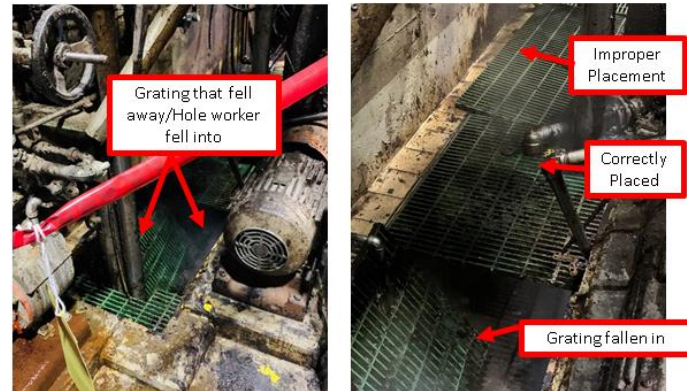
ASK YOURSELF
"Could it happen here?"

DESCRIPTION OF EVENT:

Serious Incident -Tall Oil Sump Grating

A worker was preparing to lockout a piece of equipment and was standing on some oil sump grating. The grating fell away causing the worker to fall into the sump and land in liquid up to their waist.

The fiber glass grating had been removed recently and not secured into place. This area is prone to flooding which has the potential to lift grating out of place leaving an unsecured surface.



SUGGESTED ACTIONS:

- Review with all employees the importance of securing all grating.
- Consider adding to the FLHA process grating condition and securement.
- Inspect all potential areas of grating use throughout the mill to insure that there is a mechanism to secure the grating after removal. Don't forget grating that is located on inspection platforms under equipment or in basement areas.
- Consider adding the item to the monthly JOHSC inspection process.

Most Important Take Away:

When working on equipment never assume the grating you're going to stand on is secure. Check as part of the FLHA process.

