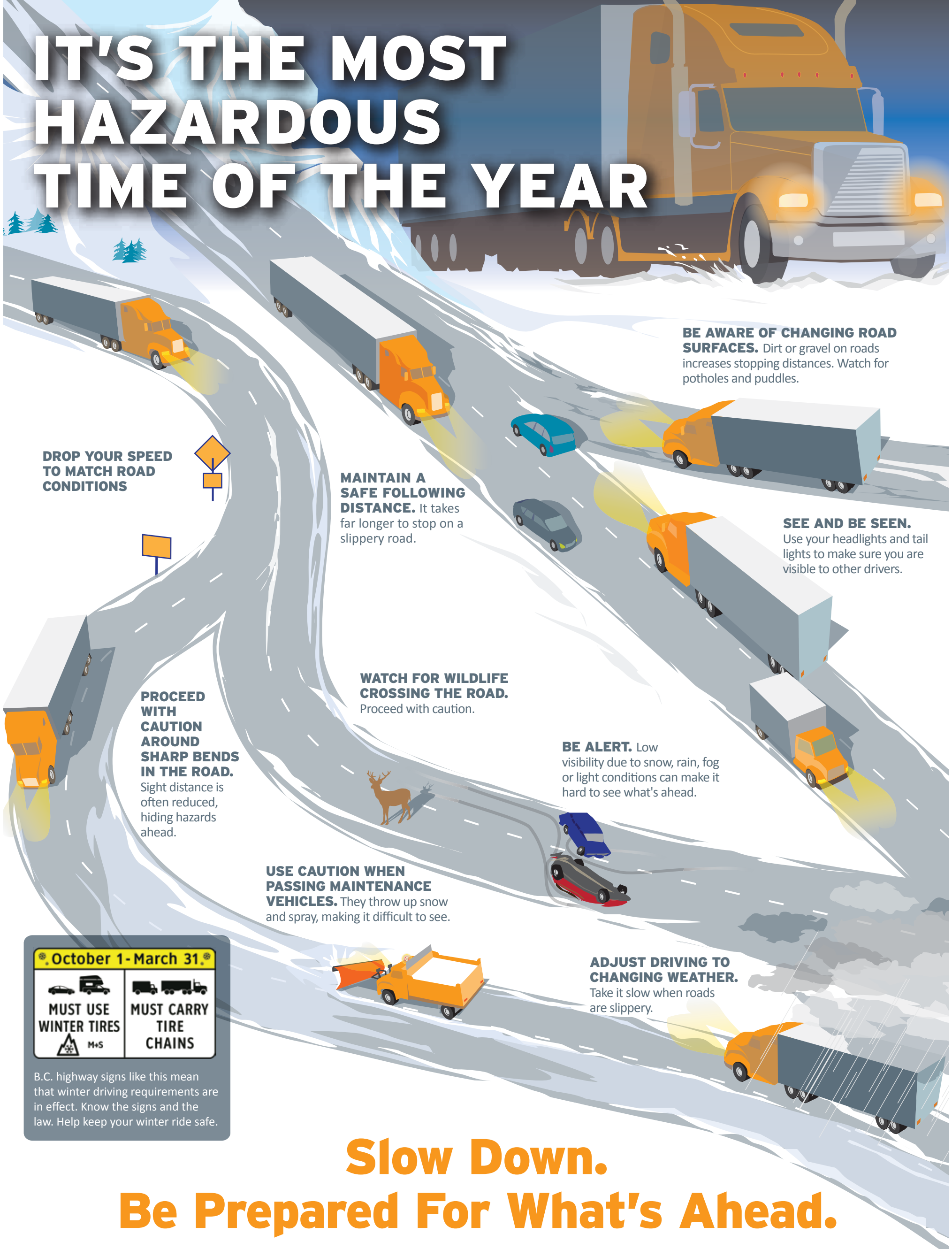


IT'S THE MOST HAZARDOUS TIME OF THE YEAR



BE AWARE OF CHANGING ROAD SURFACES. Dirt or gravel on roads increases stopping distances. Watch for potholes and puddles.

DROP YOUR SPEED TO MATCH ROAD CONDITIONS

MAINTAIN A SAFE FOLLOWING DISTANCE. It takes far longer to stop on a slippery road.

SEE AND BE SEEN. Use your headlights and tail lights to make sure you are visible to other drivers.

PROCEED WITH CAUTION AROUND SHARP BENDS IN THE ROAD. Sight distance is often reduced, hiding hazards ahead.

WATCH FOR WILDLIFE CROSSING THE ROAD. Proceed with caution.

BE ALERT. Low visibility due to snow, rain, fog or light conditions can make it hard to see what's ahead.

USE CAUTION WHEN PASSING MAINTENANCE VEHICLES. They throw up snow and spray, making it difficult to see.

ADJUST DRIVING TO CHANGING WEATHER. Take it slow when roads are slippery.

October 1 - March 31

 MUST USE WINTER TIRES M+S	 MUST CARRY TIRE CHAINS
---	-----------------------------------

B.C. highway signs like this mean that winter driving requirements are in effect. Know the signs and the law. Help keep your winter ride safe.

Slow Down. Be Prepared For What's Ahead.

For winter driving safety tools and tips visit ShiftIntoWinter.ca.
Check DriveBC.ca for current road conditions.



Disclaimer: This poster does not take the place of professional occupational health and safety advice and is not guaranteed to meet the requirements of applicable laws, regulations, and rules, including workplace health and safety laws and motor vehicle and traffic laws. The members of the Winter Driving Safety Alliance and their respective employees, officers, directors or agents (collectively the "WDSA") assume no liability for or responsibility for any loss or damage suffered or incurred by any person arising from or in any way connected with the use of or reliance upon the information contained in this brochure including, without limitation, any liability for loss or damage arising from the negligence or negligent misrepresentation of any of the WDSA in any way connected with the information contained in this brochure. The information provided in this brochure is provided on an "as is" basis. WDSA does not guarantee, warrant, or make any representation as to the quality, accuracy, completeness, timeliness, appropriateness, or suitability of any of the information provided, and disclaims all statutory or other warranties, terms, or obligations of any kind arising from the use of or reliance upon the information provided, and assumes no obligation to update the information provided or advise on future developments concerning the topics mentioned. (10-2015)