

HAZARD: Short logs on top of loads

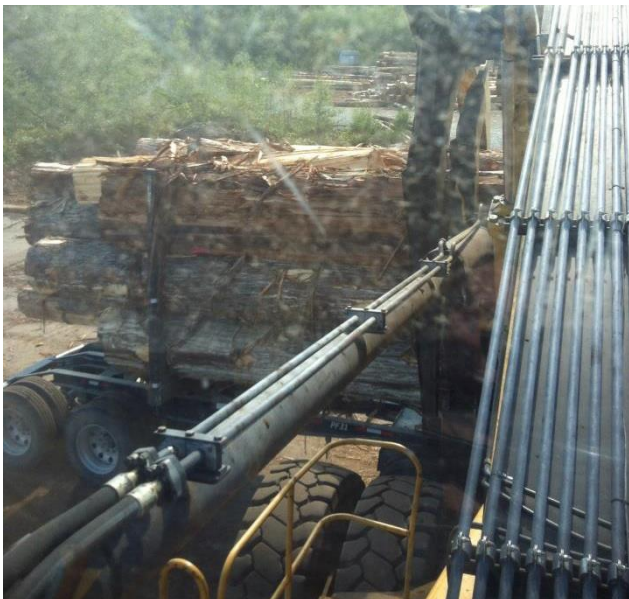
Short logs are challenging to load. Ensure you take the time to secure them properly in the load.

End of log

Front of log



Short logs that are unsecured have come off loads during transit and unloading which could have resulted in serious injuries.





Unsecured short logs also cause safety concern upon unloading at dry land sorts as logs may fall off or out of grapples.



Short logs and chunks must not be placed on top of the load when there would be a possibility of them rolling off in transit or when the load is dumped. Ensure you inspect your load prior to departure.

COMMUNICATION IS KEY – If you create a load that is double tiered or contains potential hazards that are secured, let the truck driver know. The driver can then communicate that information to the sort upon arrival and before being unloaded.