

SAFETY ALERT

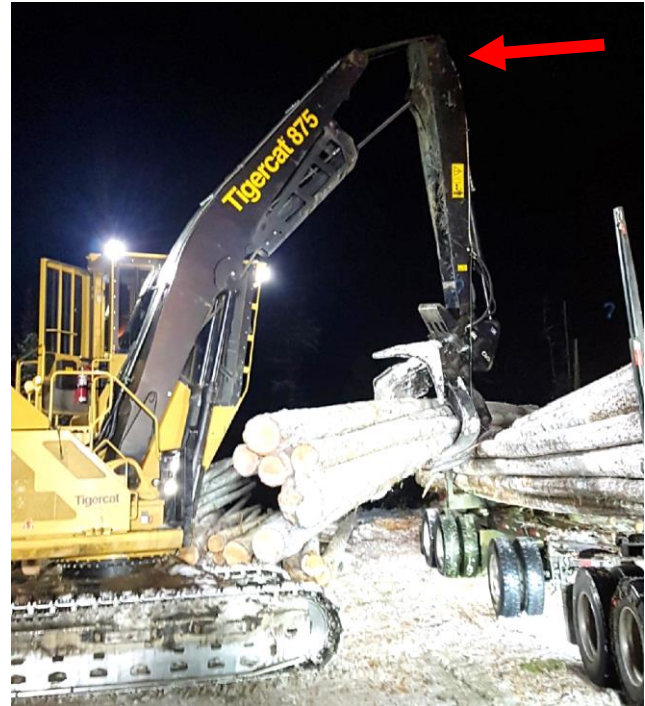
Log Loader Mechanical Failure on Boom and Stick Hinge Point

Incident Date: January 10, 2019

Incident Type: Property Damage

Location: Adams Lake Woodlands

Job Position: Loader Operator



Summary:

A log loader was swinging a grapple of long logs onto a truck trailer and a mechanical failure in the boom hinge occurred resulting in the load of logs dropping.

The steel pipe on the stick side of the boom/stick hinge-point broke away. After the break, the boom and stick assembly were supported by the cylinder and hoses. A post-incident inspection found that only half the pipe was welded --- there was not a continuous weld all the way around.

During regular greasing of the hinge point, this location is greased remotely near the grapple end as there is no practical method to regularly service or inspect this location.

The truck driver was in the clear and not at risk of being struck by a log.

Key Learnings and Recommendations:

- Always stay in the clear around active equipment and overhead hazards.
- At regular intervals, a qualified person should thoroughly inspect and test machine components and welds that regularly receive heavy loads.
- Operators using a 2015 Tigercat 875 log loader should inspect the hinge for weld defects.

For more information on this alert, please contact:

Evan Hauk, Area Supervisor
Evan.Hauk@Interfor.com

