

# SAFETY ALERT

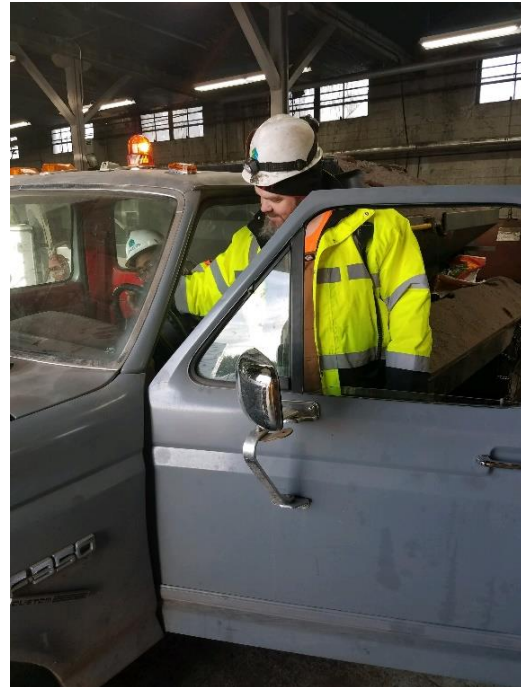
## Snowplow Through Bay Door

**Date:** December 14, 2018

**Location:** Gilchrist

**Incident Type:** Damage

**Job Position:** Sand Truck Operator



### Summary:

Vehicle was parked inside the truck shop with the bay doors closed. Employee opened door of the sander / snowplow truck and reached in and started the truck. The truck was in gear and lurched forward and went through the garage door. The truck traveled approximately three truck lengths before the employee was able to catch the truck and reach in and turn off the key.

### Further Information and/or Requirements:

- The clutch depression relay that requires that the clutch to be depressed in order to start the vehicle had been jumped and by-passed. It is not known when or by whom the relay was by-passed.
- A new harness has been ordered and installed by the mechanic.
- Employee was coached on the hazards of carbon monoxide poisoning.
- Employee was reinstructed on safe vehicle operation according to the JSA.

**For more information on this alert, please contact:**

Dave Johnson, EHS Coordinator  
Dave.Johnson@interfor.com

