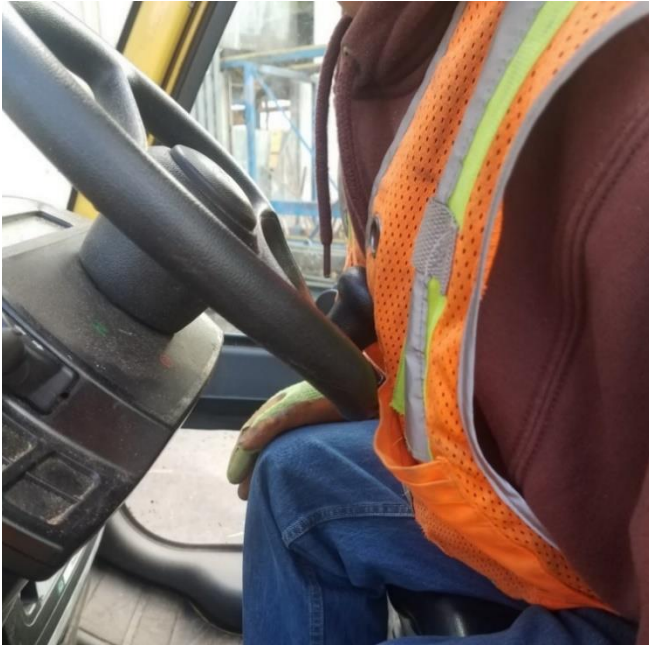


SAFETY ALERT

Forklift Fork Height



Summary:

A forklift traveling at 9.2mph (14.8 km/h) stopped immediately when the right forklift fork stuck a kiln track. Operator's chest impacted the steering assist knob. Employee was taken to the emergency room where he was diagnosed with internal bruising to the sternum area.

Further Information and/or Requirements:

- Forklift operators need to know where their forks are at all times.
- Forks should be carried approximately front axle height or a reasonable minimum distance from the operating surface.
 - Hyster 155FT front axle height is about 16 inches high – this is at or below knee height and should be adjusted to a reasonable minimum distance.
- Never travel with the mast tilted forward.
- Make a production plan:
 - A safe and acceptable production pace can be maintained to reduce pressure for crew members.
 - Pre-staging or increasing manpower during fast product runs needs to be addressed before every production run.

For more information on this alert, please contact:

Sean Murphy, EHS Coordinator, Port Angeles
Sean.Murphy@interfor.com

