



## For Safe Roads, Loads and Drivers Across British Columbia

November 2016

Issue 162

### BCFSC and FPInnovations partner to assess fatigue in log truck drivers

The BC Forest Safety Council (BCFSC) and FPInnovations have joined in a collaborative approach to determine a baseline of driver fatigue levels in log haulers in BC and to identify and evaluate on-board technologies that may assist in preventing professional driver safety incidents where fatigue is a contributing factor.

In 2014, FPInnovations' Transport & Energy and Performance Innovation Transport (PIT) groups collaboratively studied driver fatigue monitoring systems. As part of the product evaluation, FPInnovations assisted three cooperators with a driver fatigue study and evaluated one of the commercially available products. Since this study, several companies have updated or developed new fatigue products.

The BCFSC and FPInnovations recognized that a collaborative project would support the forest industry's initiative to determine the level of fatigue in BC log haulers.

The research project plan is to identify the baseline fatigue levels of log haulers and measure if improvement could be achieved by providing drivers with their current and predicted fatigue levels and / or with the implementation of on-board fatigue intervention technology.

The objectives of this project are as follows:

- To collect sleep data and assess the fatigue levels of drivers.
- To measure driver alertness level during pre-intervention (i.e. prior to implementation of onboard driver fatigue monitoring system), intervention and post intervention periods.
- To identify technologies that detect, monitor and implement driver interventions and evaluate their operational performance.

If you are a log truck driver in BC and are interested in participating in the fatigue project or would like more information on what participating entails please contact the Transportation Safety Program Manager, Trish Kohorst by telephone or email

Toll-free 1-877-741-1060 or 250-562-3215 or [transport@bcforestsafe.org](mailto:transport@bcforestsafe.org).

### Professional Log Truck Driver Training Program



Funded training available for unemployed non EI eligible and under-employed Aboriginals, further criteria may apply.

For more information Contact:



Taylor Professional Driving

Prince George  
1-877-564-7624

Or



Métis Nation

North West BC  
1-877-638-4776

North Central BC  
1-877-561-2754

Canada



Funding provided by the Government of Canada through the Canada-British Columbia Job Fund.

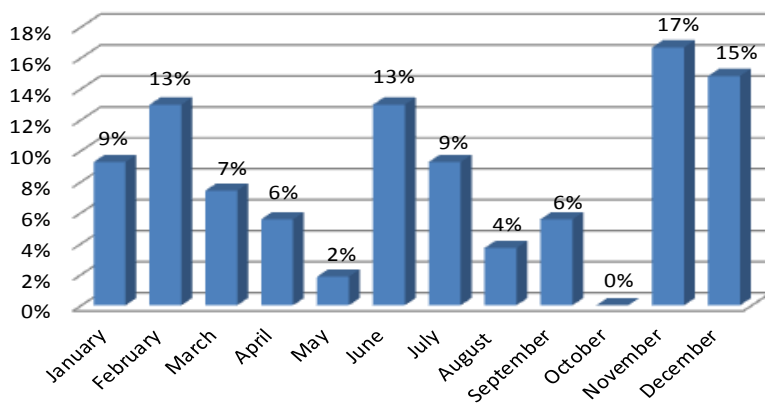
## WINTER DRIVING SAFETY

- **Slow down — drive to conditions**
- **Communicate road conditions to other drivers**
- **Wear your seatbelt**
- **Chain up — don't chance it**
- **Rest if you're tired — don't drive fatigued**

## LIVES DEPEND ON IT

Data shows more log hauling incidents during winter months; increased due diligence by industry is needed to keep the roads safe.

### Incidents by Month



Incident data supplied by industry and summarised by the BCFSC as a Trucking and Harvesting Advisory Group initiative.



### Winter driving and industry initiatives

Snow has begun to accumulate in higher elevations with other areas of the Province experiencing wet winter conditions. Industry's current focus includes winter driving safety initiatives. A collaborative approach to winter log hauling safety includes:

- Identification of mandatory chain-up conditions and/or locations
- Log haul shut down procedures
- Competency assessments
- Fatigue management
- Right and responsibility to refuse unsafe work
- Loading practices and arrangement
- Load securement
- Resource road channel safety
- Personal protective equipment for reducing outside of truck incidents:
  - Heel stops
  - Headlamps.

The Trucking and Harvesting Advisory Group is committed to reducing log hauling incidents in B.C. and supporting the above industry initiatives.

RUMBLINGS is produced to help keep you informed on what's happening in BC forestry transportation safety.

If you have best practices you would like to share, concerns you want to discuss, or topics you and others would like to learn more about, please give us a call or email: 250-562-3215 or toll-free 1-877-741-1060 [transport@bcforestsafe.org](mailto:transport@bcforestsafe.org)